

## **Orchestra Audition Requirements**

### **NMSU Philharmonic Orchestra**

**Fall 2025**

**Audition date: Tuesday, August 19 (Time TBA)**

#### **Scale and Solo Audition Requirements:**

Violins, Violas and Cellos are required to play a 3 octave scale. For basses, a 2 octave scale is required.

For all strings, one movement of a concerto or any solo piece is required.

#### **Orchestral Audition Excerpts:**

##### **Sinfonia No. 10 - Mendelssohn**

 **Violins and Violas must prepare both parts (Violin 1 and Violin 2, Viola 1 and Viola 2)**

##### **Violin 1:**

Adagio – Beginning to downbeat of measure 17

Allegro – Beginning to downbeat of measure 84

Measure 360 to the end

##### **Violin 2:**

Adagio – Beginning to downbeat of measure 17

Allegro – Measure 43 to downbeat of measure 84

Measure 360 to the end

##### **Viola 1 and 2:**

Adagio – Beginning to downbeat of measure 17

Allegro – Beginning to downbeat of measure 84

Measure 360 to the end

##### **Cello and Bass:**

Adagio - Beginning to downbeat of measure 17

Allegro – Beginning to downbeat of measure 84

## **Romance Op. 42 in C - Sibelius**

**Violins must prepare both parts (Violin 1 and Violin 2)**

**Please follow the bowings written in the provided score**

### **Violin 1 and Violin 2:**

Opening to downbeat of measure 9

Pick up to measure 43 to downbeat of measure 50

### **Viola:**

Opening to downbeat of measure 9

Measure 16 to the end of measure 23

### **Cello:**

Measure 16 to the end of measure 23

### **Bass:**

One measure before A

Measure 16 to the end of measure 23

## **Piano Concerto No. 14 K 449 – Mozart**

**Violins must prepare both parts (Violin 1 and Violin 2)**

**Please follow the bowings written in the provided score**

### **FIRST MOVEMENT (Allegro)**

#### **Violin 1:**

Beginning to downbeat of measure 31

#### **Violin 2:**

Beginning to downbeat of measure 17

### **Viola:**

Beginning to downbeat of measure 17

### **Cello and Bass:**

Beginning to downbeat of measure 17

### **SECOND MOVEMENT (Andantino)**

**Violin 1:**

Beginning to downbeat of measure 23

**Violin 2:**

Beginning to downbeat of measure 23

**Viola:**

Beginning to downbeat of measure 22

**Cello and Bass:**

Beginning to the end of measure 22

**THIRD MOVEMENT (Allegro ma non troppo)**

**Violin 1:**

Beginning to measure 32

**Violin 2:**

Beginning to measure 32

**Viola:**

Measure 227 to the downbeat of measure 235

**Cello:**

Measure 227 to the downbeat of measure 235

## Sinfonia X h-moll

Felix Mendelssohn Bartholdy

Adagio

*p*

11

*f* *p*

20

*p* *p*

29

36

*pp*

Allegro

41

*p*

45

50

56

*f*

62

68

m.b.

Viola I

3

74



*ff*

82



*ff*

*p*

V n V tp

358



364



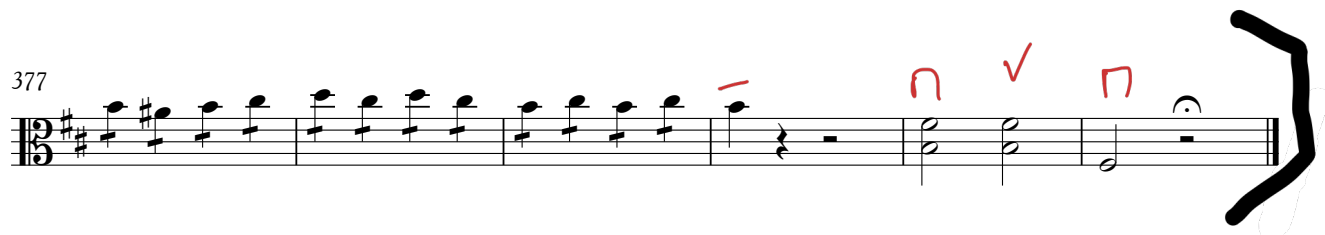
368



372



377



## Viola II

## Sinfonia X h-moll

Felix Mendelssohn Bartholdy

Adagio

13

21

30

38

44

51

58

64

70

79

*p*

*f*

*p*

*f*

*p*

*pp*

*p*

*f*

*ff*

*ff*

Allegro

Sound

359

360 *Piu Presto*

✓

365

n ✓ v ✓

370

374

*ff*

378

n v n



# Romanze für Streichorchester

C-dur

Viola

Jean Sibelius op. 42

Andante

1

7

13

19

29

34

39

45

51

58

*mp*

*mf*

*p*

*cresc.*

*dim.*

*pochettino con moto*

*sonore*

*mf*

*cresc. un pochettino*

*poco f*

*dim.*

*p*

*dim.*

*pp*

*C*

*mp*

*mf*

*cresc. poco a poco*

*D*

*cresc. molto*

*p*

*ff*

*E*

*dim.*

*mf*

*cresc. un poco*

*Tempo I*

*cresc. molto*

*f*

*ff*

*F*

*poco f*

*p*

*mp*

*cresc.*

*G*

*dim.*

*p*

*pp*

SERENISSIMA MUSIC, INC.

95369

Wolfgang Amadeus Mozart  
Piano Concerto No. 14

1

VIOLA.

*Allegro vivace.*  
**Tutti**

1

*f* *p* *f* *A*

VIOLA.

**V**  
**Andantino.**  
**Tutti**  
*sotto voce*

1

10

15

**P** **f** **p**

The musical score for the Viola part, measures 1 through 15, is presented on three staves. The first staff begins with a large bracket on the left and a 'V' above the first measure. The tempo is marked 'Andantino.' and the performance instruction is 'Tutti' with 'sotto voce' written below. The key signature has two flats (B-flat major) and the time signature is 2/4. The first staff contains measures 1 through 9. The second staff begins at measure 10 and continues to measure 14. The third staff begins at measure 15 and ends with a large bracket on the right. Dynamics include 'P' (piano) at measure 15, 'f' (forte) at measure 16, and 'p' (piano) at measure 18. Articulations such as 'n' (accents) and 'V' (breves) are placed above various notes throughout the passage.

VIOLA.

7

III. 3rd Mvt, Allegro ma non troppo

Handwritten musical score for Viola, measures 227-236, from Mozart's Piano Concerto No. 14, 3rd Movement (Allegro ma non troppo).

Measures 227-236 are shown. The score includes dynamic markings (*p*, *f*, *Ff*) and articulation (accents, slurs). A large bracket indicates a section starting at measure 236, marked *Ff* (Solo). The score is written on a single staff with a treble clef and a key signature of one flat (B-flat).

Measure 227: *p* (piano), *f* (forte). Handwritten notes: *Ee*, *Ty*, *li*, *V*.

Measure 230: *p* (piano). Handwritten notes: *n*, *V*.

Measure 236: *Ff* (Solo). Handwritten notes: *n*, *V*, *n*, *n*.

Measure 237: *p* (piano).

Measure 238: *f* (forte).

Measure 239: *p* (piano).

Measure 240: *f* (forte).